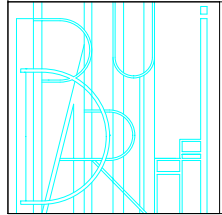


NUOVA VILLA UNIFAMILIARE in classe "A"

Misano gera D'Adda (BG) - Via Anelli Padre Andrea



STUDIO TECNICO ASSOCIATO
BARUFFI

24043 CARAVAGGIO - BG - Circonvallazione Porta Nuova, civ. 5
• Tel 0363/51212 • e-mail: info@studiobaruffi.it

Consegna
Agosto 2022

VILLA

3

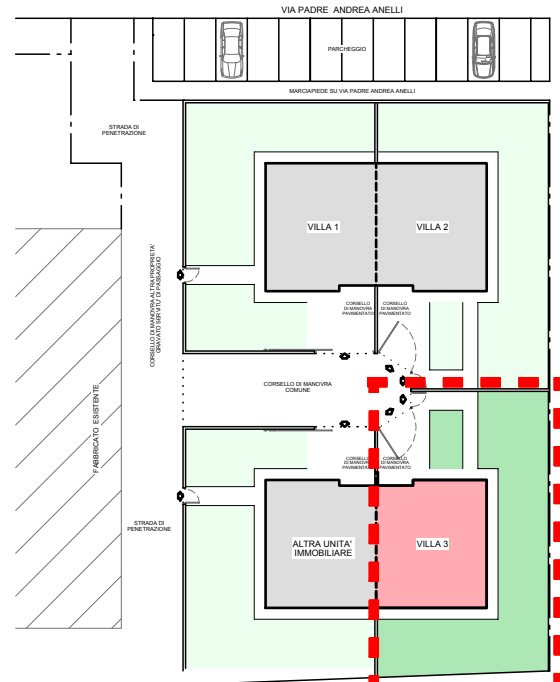
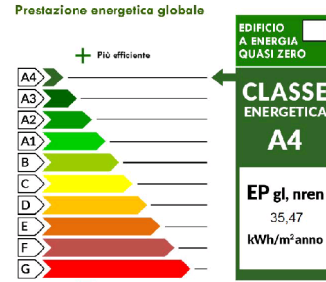


IMMAGINI A SCOPO
PURAMENTE
ILLUSTRATIVO

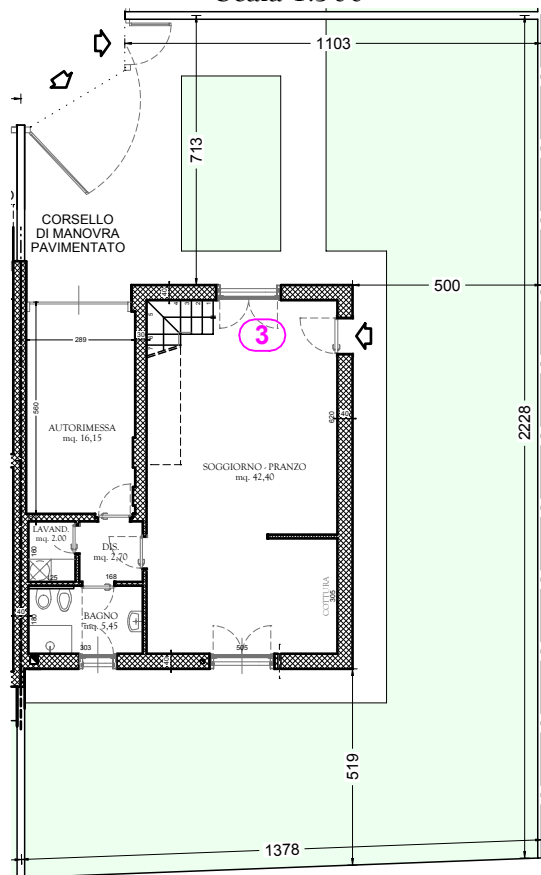


SUP. COMM. LORDA ABITAZIONE = mq 175,50 circa
SUP. AREA SCOPERTA ESTERNA ESCLUSIVA = mq 218 circa
SUP. LOTTO DI PERTINENZA ESCLUSIVA = mq. 305 circa

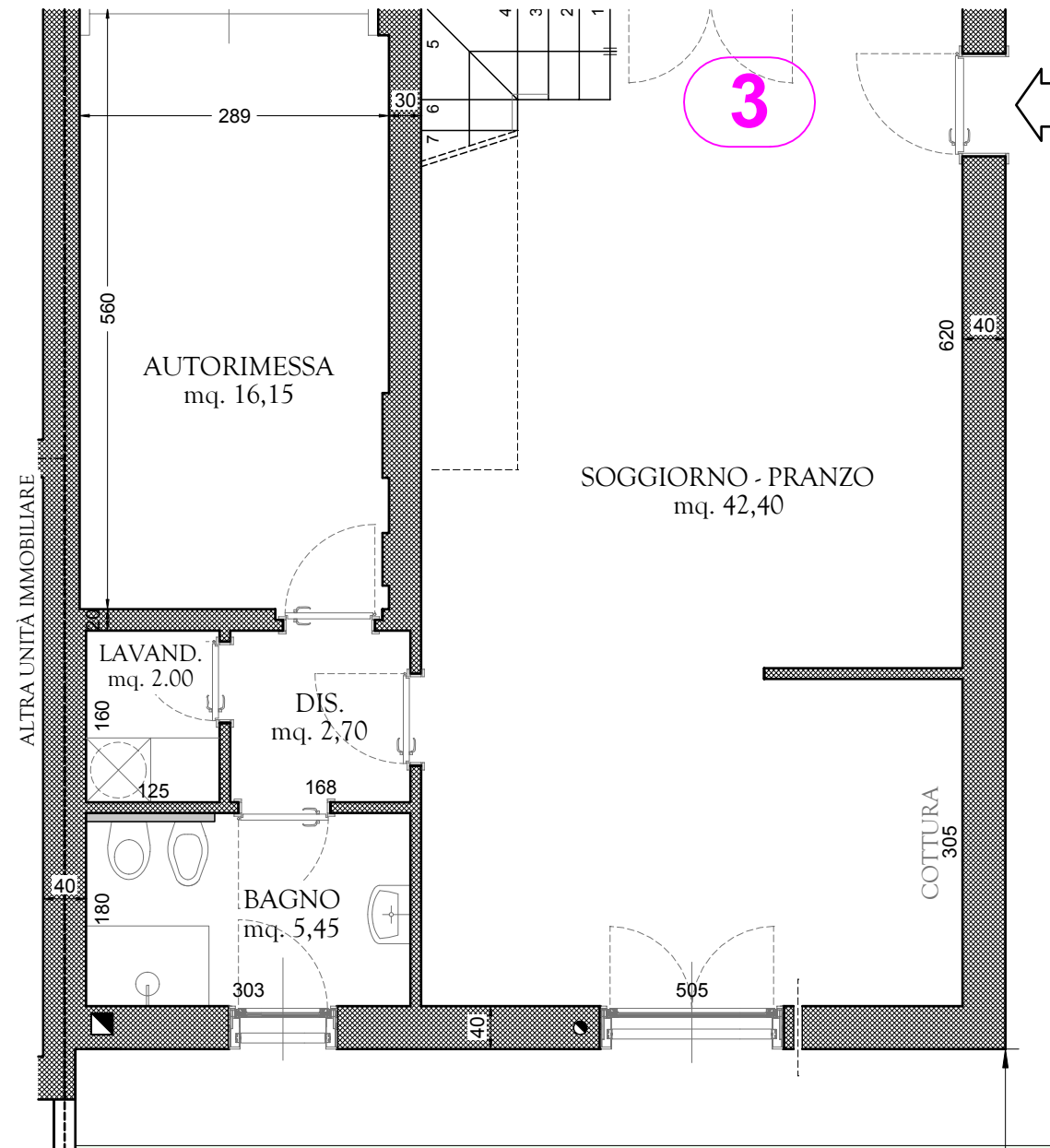
1,75 KW
FOTOVOLTAICO
IN COPERTURA



PLANIMETRIA D'INQUADRAMENTO
Scala 1:500

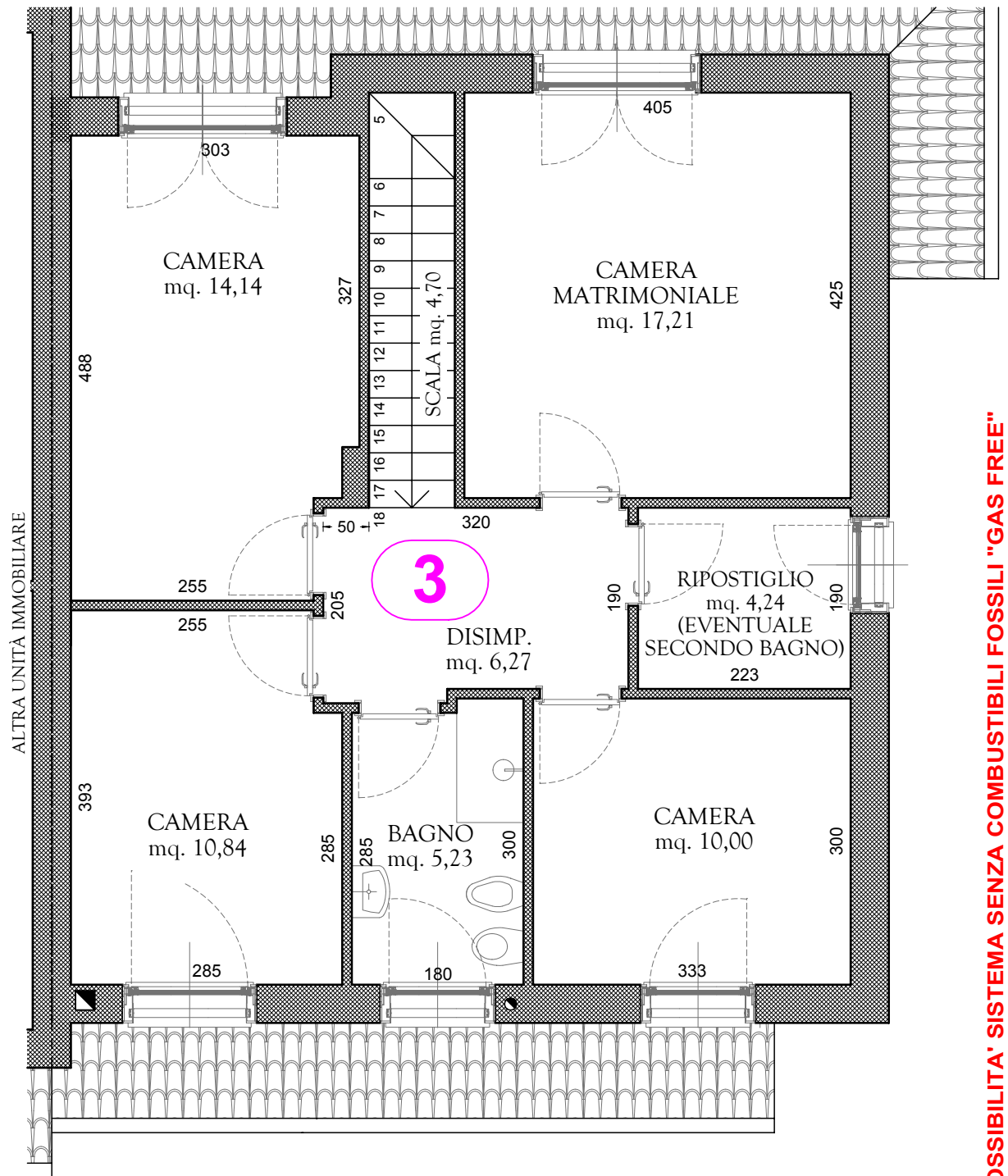


PIANTA PIANO TERRA_Scala 1:200



PIANTA PIANO TERRA

tolleranza misurazioni 3%



PIANTA PIANO PRIMO

(275)

POSSIBILITA' SISTEMA SENZA COMBUSTIBILI FOSSILI "GAS FREE"